

T.E.A.M

Teachers, ENT, Audiologist
and Mentors working together
to serve families.

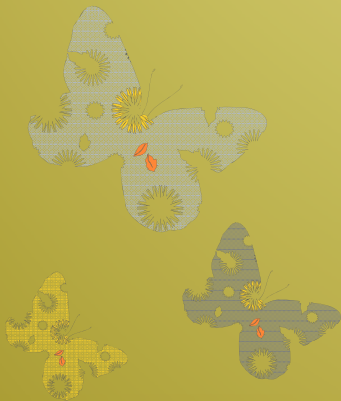
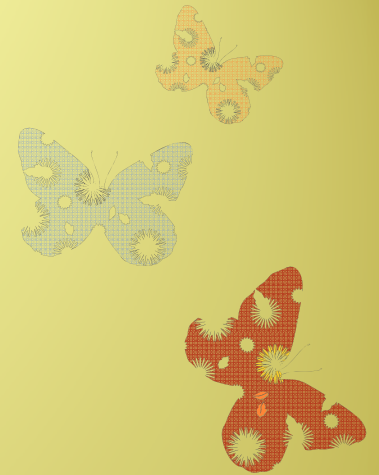
Introduction

- ✿ Lyra Repplinger MS

- ✿ Developmental Therapist for Early Intervention
- ✿ University of Chicago Pediatric Hearing Loss Team

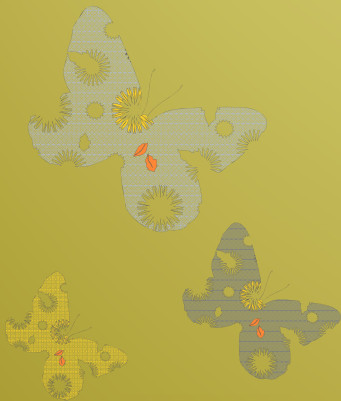
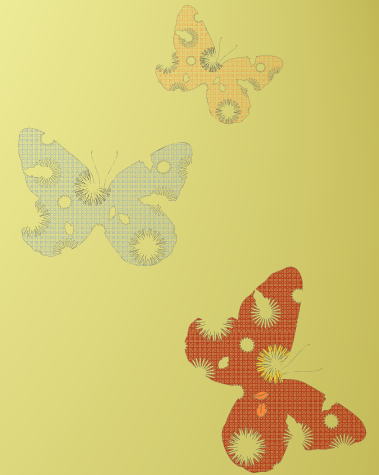
- ✿ Carrie Balian

- ✿ Guide By Your Side IL Coordinator
- ✿ Parent of a child with a hearing loss



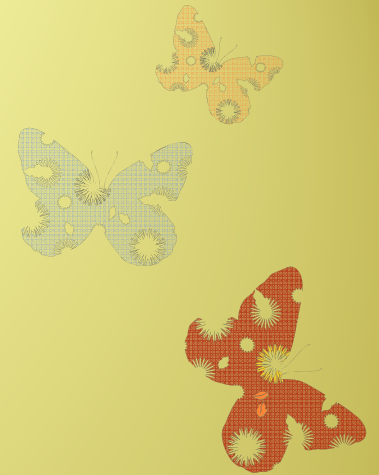
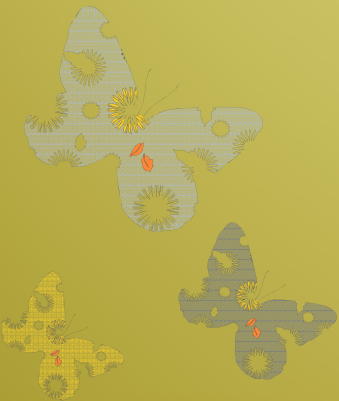
How our collaboration started

- ✿ State Team Collaborative
- ✿ National Team Collaborative
 - ✿ That is where this all started



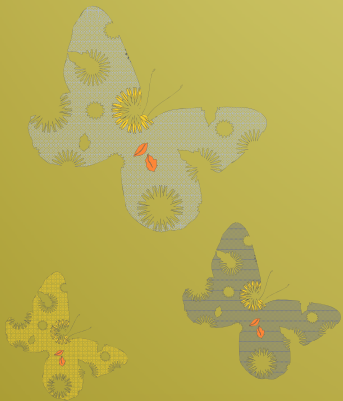
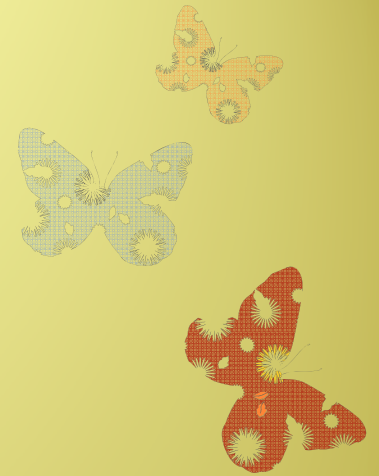
TEAM

- ✿ Define each member of the team
- ✿ See parent and professional perspective
- ✿ Discuss experiences of best practices to increase family support



Who is in our audience?

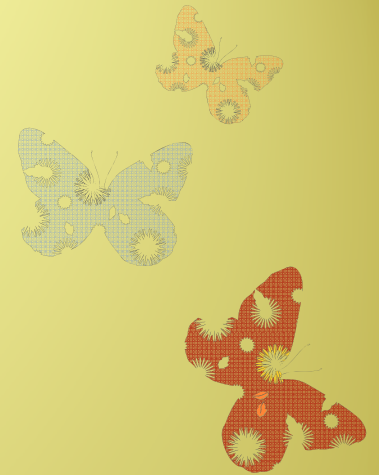
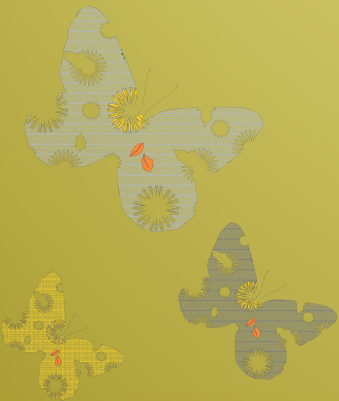
- ✿ DTH/Teachers/ SLP
- ✿ Parents
- ✿ Audiologists
- ✿ ENT's?



T is for TEACHER

✿ Family View of the teacher

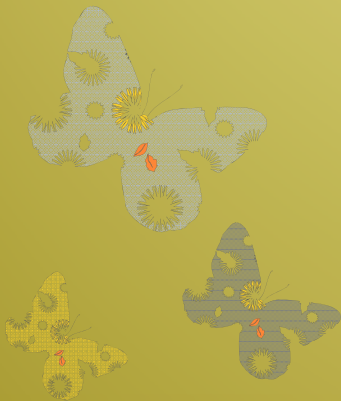
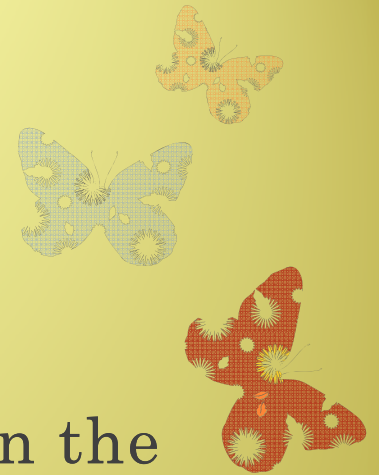
- ✿ Strong bond almost like they assume the role of another family member
- ✿ Look to them for advice, encouragement
- ✿ Rely on them for any “red flags”
- ✿ Anticipate them to drive us to new levels



T is for TEACHER

✿ Professional Perspective

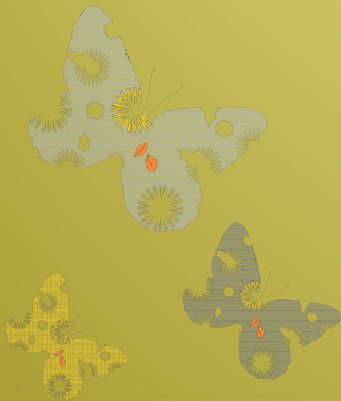
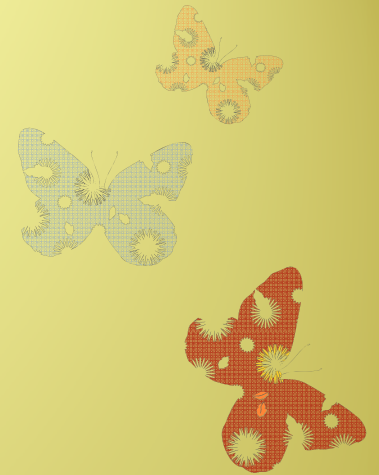
- ✿ Often feel like a bridge between the child's medical world
- ✿ Start open lines of communication with audiologists
- ✿ Remind parents to sign a release of information at the doctors office
- ✿ Encourage parents to ask for summary, reports and audiograms
- ✿ Give parents a business card to hand off the the audiologist



E is for ENT

✿ Parent Perspective

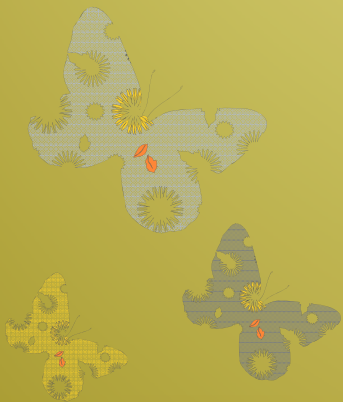
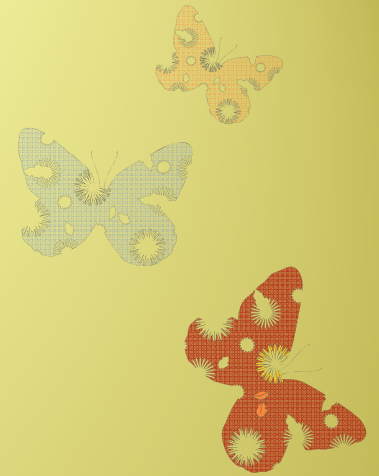
- ✿ Not as personal of a relationship
- ✿ Look up to them for the “answer”
- ✿ Nervous/relieved to meet the specialist



E is for ENT

✿ Professional Perspective

- ✿ A child with hearing loss should be followed up with a pediatric ENT.
- ✿ Ears are their specialty
- ✿ Suggest further medical testing to learn more about the hearing loss diagnosis.



A is for Audiologist

- ✿ Parent Perspective

- ✿ Great communicator

- ✿ With my family

- ✿ Between the other providers that are serving my child

- ✿ Great at listening about

- ✿ Our struggles

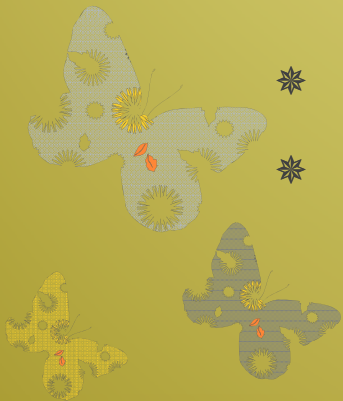
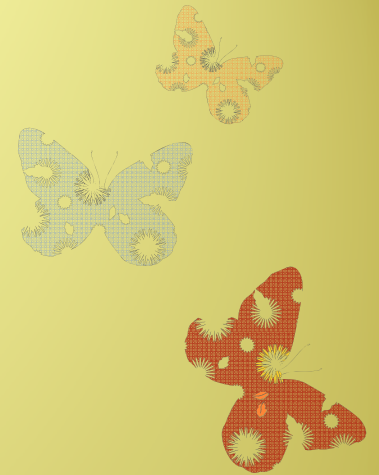
- ✿ Our successes

- ✿ Our questions

- ✿ No surprises – keeps me in the loop

- ✿ Management

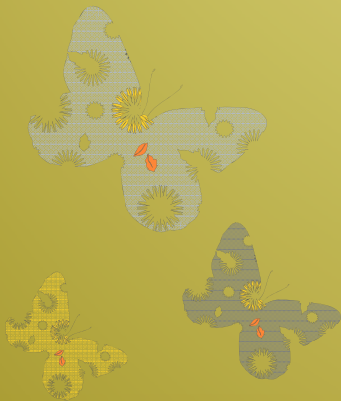
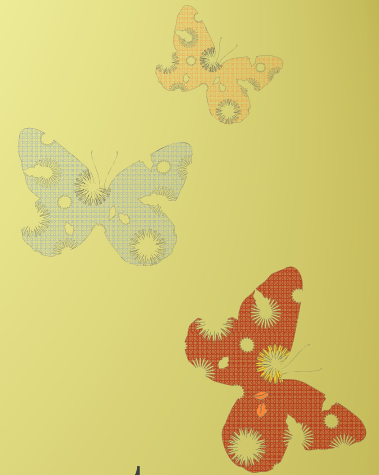
- ✿ Works well with me and my child



A is for Audiologist

✿ Professional Perspective

- ✿ Behavioral test may not be accurate in the booth
- ✿ Reach out to therapist/teachers to know more about functional hearing of child
- ✿ Invite co-treatment if possible
- ✿ Business card exchange



M is for Mentor

✿ Parent Perspective

✿ Crave the opportunity to talk to others

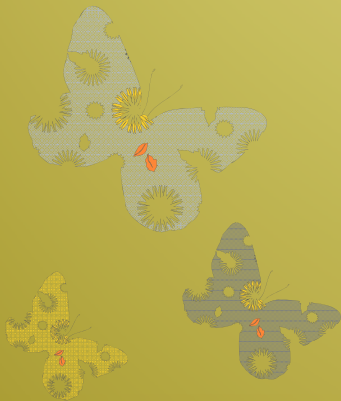
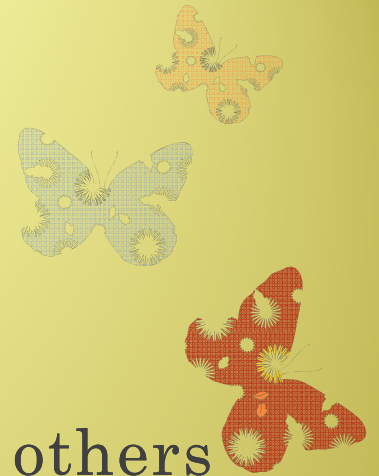
✿ What is it like?

✿ What to expect

✿ Look to their personal experiences to guide us through our hurdles

✿ Share resources

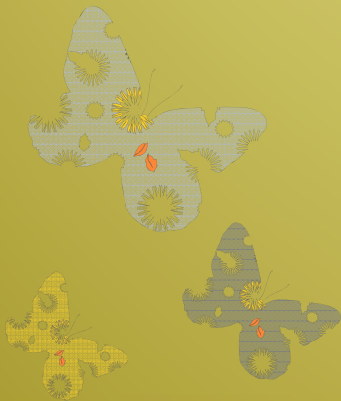
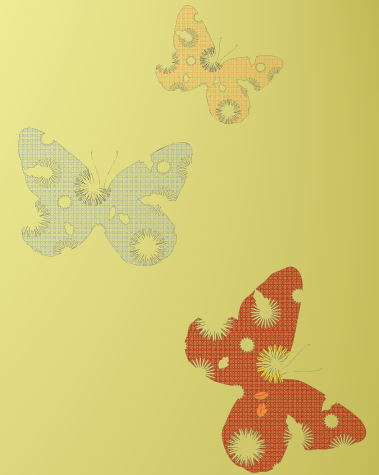
✿ Opportunities for our children to connect



M is for Mentor

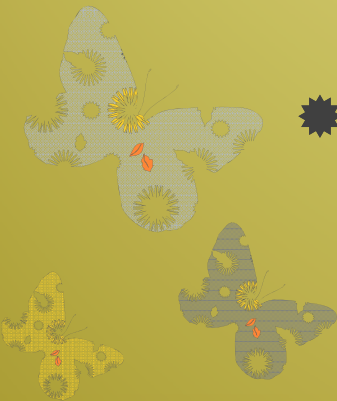
✿ Professional Perspective

- ✿ Mentors are a great asset to a medical team
- ✿ Mentors are a wealth of knowledge.
- ✿ Parents are looking for others who have been in their shoes.
- ✿ Results from the University of Chicago's participation in the Guide By Your Side Program



What does working as a TEAM mean?

- ✿ Multidisciplines coming together to give families optimal service
- ✿ Ups the level of responsibility of each team member to communicate more effectively with one another.
- ✿ Small changes can get results.



An example of from the University of Chicago

✿ video

